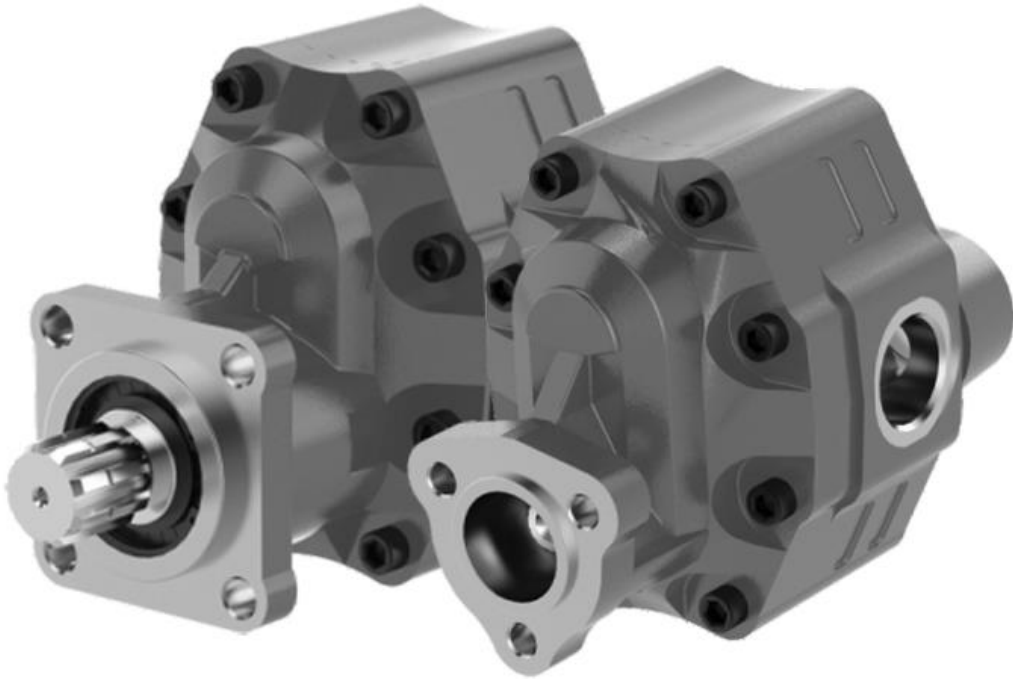


CAST IRON HYDRAULIC GEAR PUMPS

www.hydrex.com.tr



 **HYDREX**

INDEX

20 Series Gear Pump	3
30 Series Gear Pump	3
35 Series Gear Pump	5
40 Series Gear Pump	6
30 Series Tractor Shaft Gear Pump	6
40 Series Tractor Shaft Gear Pump	6

GEAR PUMP

20 Series - ISO Type(4 Bolts) Bi-directional



ORDER CODE	Displacement cm ³ /rev at 1000 rpm	Max. Work Pressure (bar)	Max. Speed	Inlet	Outlet
T06-0001	6,1	280	3000	G 1/2"	G 1/2"
T06-0002	10,2	280	3000	G 1/2"	G 1/2"
T06-0003	16,2	280	3000	G 1/2"	G 1/2"
T06-0004	20,2	260	3000	G 1/2"	G 1/2"
T06-0005	25,3	220	3000	G 3/4"	G 3/4"
T06-0006	32,3	190	2800	G 3/4"	G 3/4"
T06-0007	40,1	180	2800	G 3/4"	G 3/4"

20 Series - ISO Type(3 Bolts) Bi-directional

ORDER CODE	Displacement cm ³ /rev at 1000 rpm	Max. Work Pressure (bar)	Max. Speed	Inlet	Outlet
T06-0001	6,1	280	3000	G 1/2"	G 1/2"
T06-0002	10,2	280	3000	G 1/2"	G 1/2"
T06-0003	16,2	280	3000	G 1/2"	G 1/2"
T06-0004	20,2	260	3000	G 1/2"	G 1/2"
T06-0005	25,3	220	3000	G 3/4"	G 3/4"
T06-0006	32,3	190	2800	G 3/4"	G 3/4"
T06-0007	40,1	180	2800	G 3/4"	G 3/4"



30 Series - ISO Type(4 Bolts) CW or CCW



ORDER CODE CCW	ORDER CODE CW	Displacement cm ³ /rev at 1000 rpm	Max. Work Pressure (bar)	Max. Speed	Inlet	Outlet
T06-0024	T06-0015	17,2	300	2800	G 3/4"	G 1/2"
T06-0025	T06-0016	27,3	300	2800	G 3/4"	G 1/2"
T06-0026	T06-0017	33,8	285	2600	G 3/4"	G 1/2"
T06-0027	T06-0018	43,8	280	2300	G 1"	G 3/4"
T06-0028	T06-0019	51,7	230	2300	G 1"	G 3/4"
T06-0029	T06-0020	61,9	220	2000	G 1"	G 3/4"
T06-0030	T06-0021	73,1	200	2000	G 1 1/4"	G 1"
T06-0031	T06-0022	82,1	200	1900	G 1 1/4"	G 1"
T06-0032	T06-0023	100,5	200	1900	G 1 1/4"	G 1"

GEAR PUMP

30 Series - UNI Type(3 Bolts) CW or CCW



ORDER CODE		Displacement cm ³ /rev at 1000 rpm	Max. Work Pressure (bar)	Max. Speed	Inlet	Outlet
CCW	CW					
T06-0042	T06-0033	17,2	300	2800	G 3/4"	G 1/2"
T06-0043	T06-0034	27,3	300	2800	G 3/4"	G 1/2"
T06-0044	T06-0035	33,8	285	2600	G 3/4"	G 1/2"
T06-0045	T06-0036	43,8	280	2300	G 1"	G 3/4"
T06-0046	T06-0037	51,7	230	2300	G 1"	G 3/4"
T06-0047	T06-0038	61,9	220	2000	G 1"	G 3/4"
T06-0048	T06-0039	73,1	200	2000	G 1 1/4"	G 1"
T06-0049	T06-0040	82,1	200	1900	G 1 1/4"	G 1"
T06-0050	T06-0041	100,5	200	1900	G 1 1/4"	G 1"

30 Series - ISO Type(4 Bolts) Bi-directional

ORDER CODE	Displacement cm ³ /rev at 1000 rpm	Max. Work Pressure (bar)	Max. Speed	Inlet	Outlet
T06-0051	17,2	300	2800	G 1/2"	G 1/2"
T06-0052	27,3	300	2800	G 3/4"	G 3/4"
T06-0053	33,8	285	2600	G 3/4"	G 3/4"
T06-0054	43,8	280	2300	G 1"	G 1"
T06-0055	51,7	230	2300	G 1"	G 1"
T06-0056	61,9	220	1900	G 1"	G 1"
T06-0057	82,1	200	1700	G 1 1/4"	G 1 1/4"



30 Series - UNI Type(3 Bolts) Bi-directional



ORDER CODE	Displacement cm ³ /rev at 1000 rpm	Max. Work Pressure (bar)	Max. Speed	Inlet	Outlet
T06-0058	17,2	300	2800	G 1/2"	G 1/2"
T06-0059	27,3	300	2800	G 3/4"	G 3/4"
T06-0060	33,8	285	2600	G 3/4"	G 3/4"
T06-0061	43,8	280	2300	G 1"	G 1"
T06-0062	51,7	230	2300	G 1"	G 1"
T06-0063	61,9	220	1900	G 1"	G 1"
T06-0064	82,1	200	1700	G 1 1/4"	G 1 1/4"

GEAR PUMP

35 Series - ISO Type(4 Bolts) Bi-directional



ORDER CODE	Displacement cm ³ /rev at 1000 rpm	Max. Work Pressure (bar)	Max. Speed	Inlet	Outlet
T06-0065	62,5	230	2200	G 1"	G 1"
T06-0066	90,2	230	2200	G 1 1/4"	G 1 1/4"
T06-0067	113,2	200	2200	G 1 1/4"	G 1 1/4"

35 Series - UNI Type(3 Bolts) Bi-directional

ORDER CODE	Displacement cm ³ /rev at 1000 rpm	Max. Work Pressure (bar)	Max. Speed	Inlet	Outlet
T06-0068	62,5	230	2200	G 1"	G 1"
T06-0069	90,2	230	2200	G 1 1/4"	G 1 1/4"
T06-0070	113,2	200	2200	G 1 1/4"	G 1 1/4"



35 Series - ISO Type(4 Bolts)) CW or CCW



ORDER CODE CCW	ORDER CODE CW	Displacement cm ³ /rev at 1000 rpm	Max. Work Pressure (bar)	Max. Speed	Inlet	Outlet
T06-0077	T06-0071	63,2	275	2600	G 1"	G 3/4"
T06-0078	T06-0072	73,1	270	2600	G 1"	G 3/4"
T06-0079	T06-0073	87,2	260	2600	G 1 1/4"	G 1"
T06-0080	T06-0074	109	235	2600	G 1 1/4"	G 1"
T06-0081	T06-0075	132,9	225	2400	G 1 1/2"	G 1"
T06-0082	T06-0076	151	180	2400	G 1 1/2"	G 1"

GEAR PUMP

40 Series - ISO Type(4 Bolts) CW or CCW



ORDER CODE		Displacement cm ³ /rev at 1000 rpm	Max. Work Pressure (bar)	Max. Speed	Inlet	Outlet
CCW	CW					
T06-0077	T06-0071	63,2	275	2600	G 1"	G 3/4"
T06-0078	T06-0072	73,1	270	2600	G 1"	G 3/4"
T06-0079	T06-0073	87,2	260	2600	G 1 1/4"	G 1"
T06-0080	T06-0074	109	235	2600	G 1 1/4"	G 1"
T06-0081	T06-0075	132,9	225	2400	G 1 1/2"	G 1"
T06-0082	T06-0076	151	180	2400	G 1 1/2"	G 1"

30 Series Tractor Shaft Gear Pump - ISO Type(4 Bolts) CW or CCW

ORDER CODE		Displacement cm ³ /rev at 1000 rpm	Max. Work Pressure (bar)	Max. Speed	Inlet	Outlet
CCW	CW					
T06-0102	T06-0095	17,2	280	3000	G 1/2"	G 1/2"
T06-0103	T06-0096	27,3	280	3000	G 3/4"	G 3/4"
T06-0104	T06-0097	33,8	270	2700	G 3/4"	G 3/4"
T06-0105	T06-0098	43,8	265	2400	G 1"	G 3/4"
T06-0106	T06-0099	51,7	220	2400	G 1"	G 1"
T06-0107	T06-0100	61,9	215	2100	G 1"	G 1"
T06-0108	T06-0101	82,1	200	1900	G 1 1/4"	G 1"



40 Series Tractor Shaft Gear Pump - ISO Type(4 Bolts) CW or CCW



ORDER CODE		Displacement cm ³ /rev at 1000 rpm	Max. Work Pressure (bar)	Max. Speed	Inlet	Outlet
CCW	CW					
T06-0115	T06-0109	63,2	260	2600	G 1"	G 3/4"
T06-0116	T06-0110	73,1	260	2600	G 1"	G 3/4"
T06-0117	T06-0111	87,2	250	2600	G 1 1/4"	G 1"
T06-0118	T06-0112	108,2	240	2600	G 1 1/4"	G 1"
T06-0119	T06-0113	132,9	220	2400	G 1 1/4"	G 1"
T06-0120	T06-0114	152,1	180	2400	G 1 1/4"	G 1"

HYDREX

A.O.S.B. 10.000 Sokak No.22
Çiğli / İzmir / Türkiye
Tel: +90 232 376 79 99
Fax: +90 232 376 80 78

sales@hyrex.com.tr
info@hyrex.com.tr

www.hyrex.com.tr

